



## Outline

This solution extends the base functionality of Model Manager and Design Management to allow users to manage product and project documentation, whilst working effectively in a team environment.

The PDM Anydocs add-on to Model Manager supports most Microsoft Windows based single file formats such as WORD, EXCEL, PowerPoint and ADOBE Photoshop etc.

## Out of the box

This add-on module is available as an out of the box solution, without any configuration or modification. However, Model Manager is a highly configurable product, which can be tailored to meet specific customer business rules and requirements including integration into non standard Customer specific document classes.

## Increased Productivity

Projects with large amounts of product and project data are managed by a powerful set of features to greatly increase workgroup productivity, and provide mechanisms to aid ISO 9000 control and revision control tracking.

Save valuable time by answering such questions as:

- Where is the document used?
- When was the document last modified and by whom?
- What parts or projects do these documents relate to and who is working with them?
- What is the current status of a Document WIP, Approved and Released?

Eliminating the need to ask:

- Where are the related documents to this part or project stored?
- Can I update this document? Do I have the correct permission to modify this document?

## Concurrent Engineering

Users can share project data between design teams and individuals simultaneously. With only one unique copy of a document at each revision, Model Manager enables you to build unlimited Document to Part and Document to Project relationships.

These relationships are very powerful and provide you with valuable where used information when you are looking at changing a document and need to understand the effect of the changes you are making.

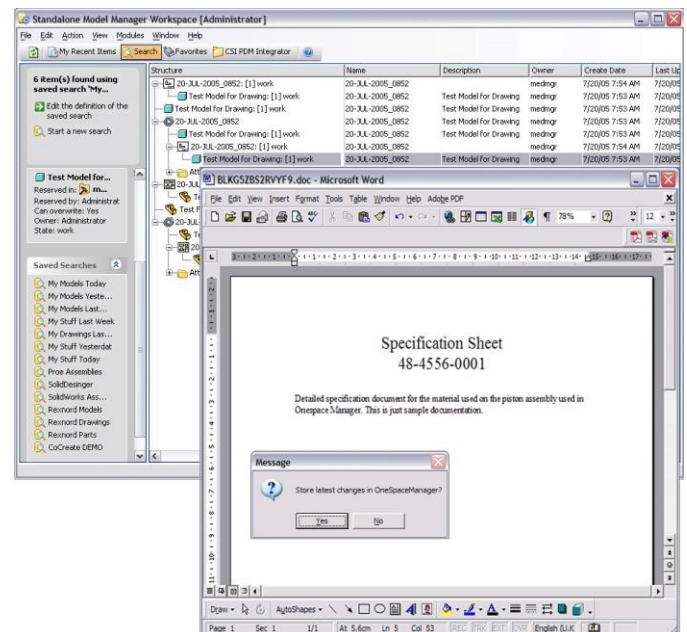
## File Storage and Retrieval

An easy-to-use interface allows users to find, load, modify and store documents without having to keep

track of complicated directory paths within the Windows file system.

## State Based Access Controls

A default set of states and access controls are available to track the lifecycle of a document and control who can create, modify and up-issue the document and change it to a new state such as from Approved to Released.



## System Requirements

- Model Manager V19 or later.
- Microsoft Windows 7,8 or 10 Client

## Licensing

PDM Anydocs is licensed per concurrent (floating) user. The license is managed using the standard CoCreate MEI's license server.

This module supports both the Design Management and Model Manager Client environments.

## Installation and Administration

The administration and configuration of this module is all carried out through the standard Model Manager Administration user interface.

## Ordering Information

For further information please contact CSI direct using email to [info@csi-europe.com](mailto:info@csi-europe.com) or your regional authorised CoCreate Reseller Partner.